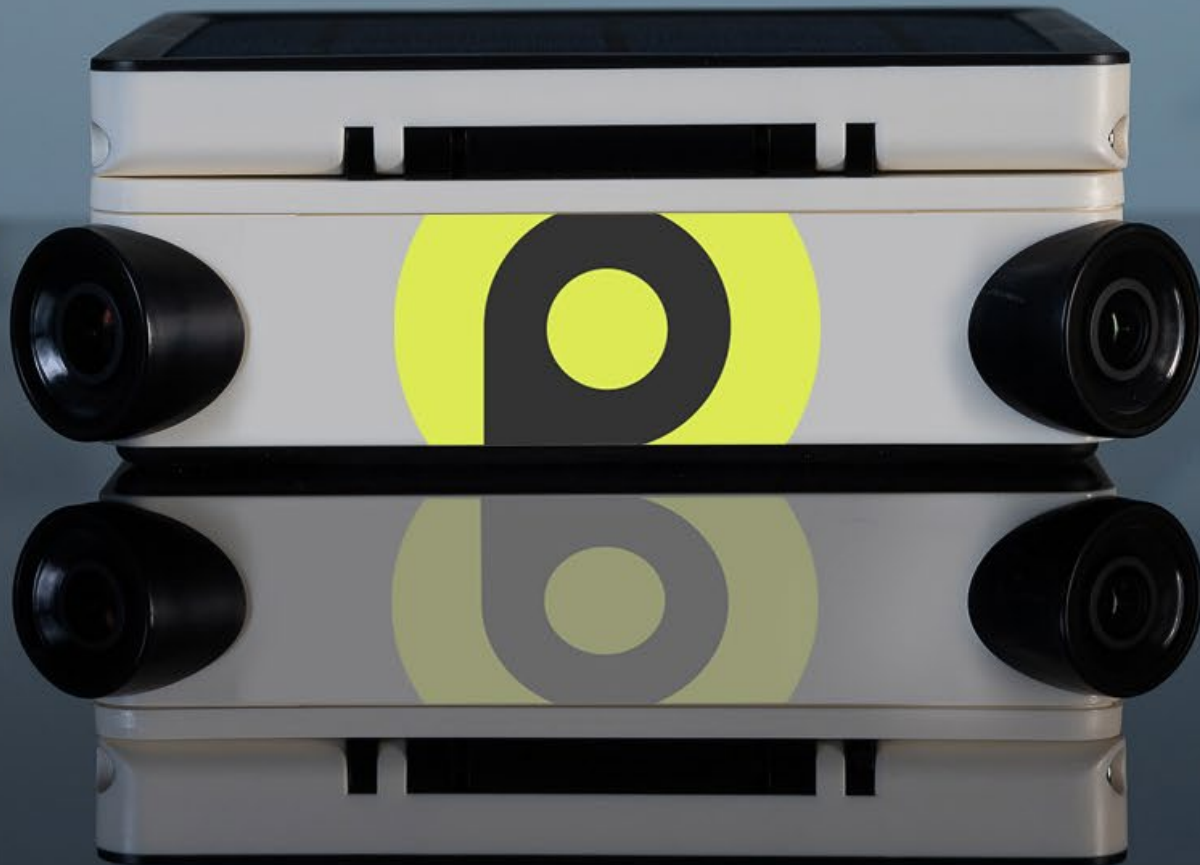




View the status of your construction site in real time.  
Show your customers the final timelapse video.



100% connected  
 **PANORAMICA**





## 4K 220°

Two wide-angle lenses for outstanding image quality; two photos combined for breathtaking scenic views. Choose between Full HD and 4K.

# 4G / MICROSD

No compromises. Two image formats: single or combined, so you don't have to choose! Send your JPEG photos to the cloud.



 PANORAMICA

## 100% selfsufficient & Always on

A high-performance battery for taking up to 6,000 photos without sunshine in "Event" mode. Stay in tune with your Panoramica timelapse webcam and take pictures remotely, on demand.[card](http://demand.card).



# Weatherproof IP66

A weatherproof camera designed for outdoor use. Be it raining or snowing, your Panoramica timelapse camera follows you on your adventures.

 **PANORAMICA**

# Specifications

Dimensions: 210 x 180 x 70mm / 1.60 kg

Cameras: Two 16-Mpix camera sensors for panoramic photos

Sensors Image Sensors: Sony Exmor R 16 Mpx

Lenses: F2.8 wide angle lenses

DFOV: 149°

Maximum resolution of the sensors: 16 Mpx

Full resolution image size (per sensor): 4608 x 3456

Size of the sensors: 1/2,3

Upload pictures resolution: Fixed Resized pictures 4K

Photos format: Jpeg

Resolution of timelapse videos: Up to 4K

Fastening system Weatherproof: IP 66 Operating temperature: -10 / + 50° C

Details of resistance to external conditions: Designed for extended outdoor use (resistant to sand, snow, rain, etc.)

Rotating and tilting arm of solar panel made with anodized aluminum

Magnetic closure of the solar panel

Storage temperature: -25 / + 60 °C

Storage (not included): Micro SD Card up to 128 GB or Online

Battery and solar panel: Fully autonomous power management: Built-in Li-on battery and Solar panel

Charging: Micro USB 5V / 2A max.

Wireless data sending: Periodic connection in WIFI or 4G/LTE

Operating temperature Weatherproof: IP 66

Operating temperature: -10 / + 50° C

Shooting Interval Long-term sequence: 5 minutes minimum

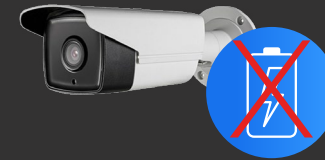


# Some customers

**Torre Milano**



**Residenze Aurora**



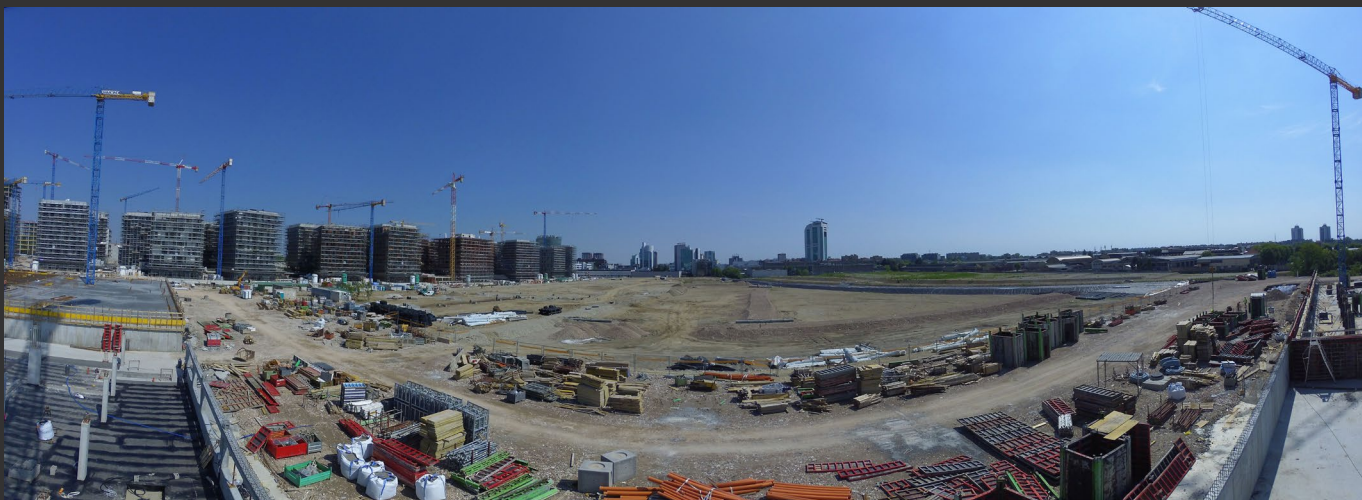
**Fixed lens**  
No solar panel



**SeiMilano**



**Amazon Logistic**



**220° lens**

With solar panel



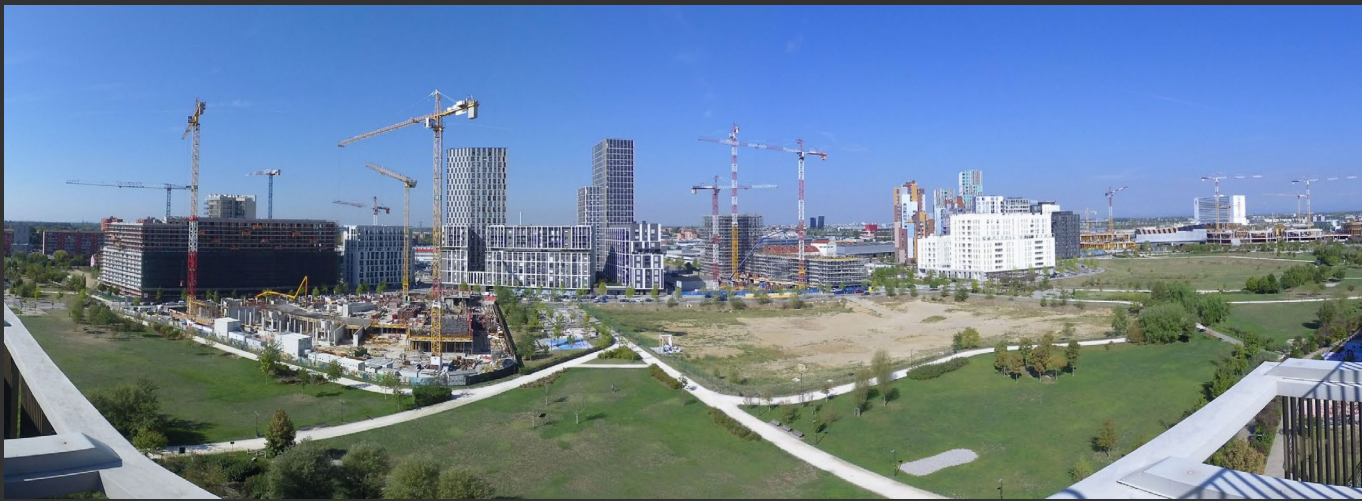
**SeiMilano Park**



**Aromata**



**ParkTowers**



**UpTown**

**220° photos**  
With solar panel



**Biella**



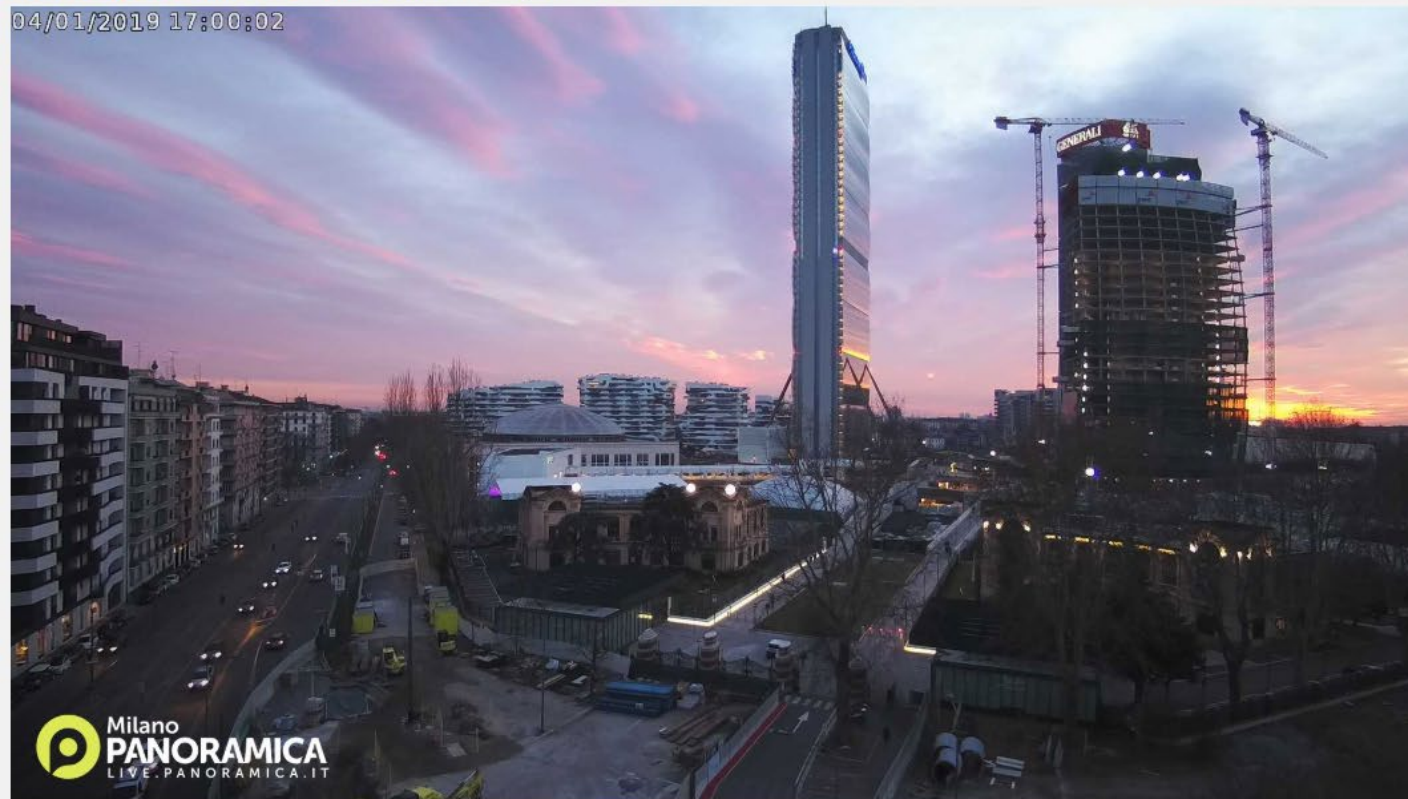
**Colleferro**

# Our control panel

[Archivio](#)[Prodotti](#)[Live](#)[Team](#)[Blog](#)

[Home](#) / [Live Webcam](#) / [Lombardia](#) / [Milano CityLife](#) - In diretta

04/01/2019 17:00:02

[OGGI](#)[IERI](#)[WOW](#)[VIDEO](#)

05:00



06:00



07:00



08:00



09:00



10:00



11:00



12:00



13:00



14:00



15:00



16:00



17:00



18:00



19:00



20:00



21:00



22:00

[live.panoramica.it](http://live.panoramica.it)



**Francesco Langiulli**

Referente commerciale Lombardia

+39 328 84 87 899

[f.langiulli@panoramica.it](mailto:f.langiulli@panoramica.it)

**Gaetano Madonia**

Referente commerciale Valle d'Aosta e Piemonte

+39 345 92 16 270

[g.madonia@panoramica.it](mailto:g.madonia@panoramica.it)